



Welcome to Term 1, 2025

# NEWSLETTER

Term 1 2025

Phone: 02 6496 1918 Email: [admin@playability.com.au](mailto:admin@playability.com.au)

Post: PO BOX 1163 BEGA, NSW, 2550

Website: [www.playability.com.au](http://www.playability.com.au) NDIS ID [4050003241](#)

## Welcome to 2025!

A brand-new year is here, and with it comes fresh ideas, new energy, and wonderful new faces joining our PlayAbility family. We can't wait to see what adventures 2025 will bring!

Before we dive in, we have a couple of goodbyes to say.

First, a big farewell to Halle, our fun-loving playgroup assistant from the past year. Right now, she's off on an exciting overseas adventure, making memories before heading to university when she returns. We wish her all the best!

An even bigger goodbye goes to Geoff, who has been part of PlayAbility since 2011 and our CEO since 2018. Geoff's impact on PlayAbility has been enormous—from always showing up with a warm smile to leading us through a pandemic and helping secure our amazing HUB in Bega. Now, he's taking some well-deserved time with his family, and we send him our heartfelt thanks and best wishes for the future.



### New Faces

As we say goodbye to old friends, we're also excited to welcome new ones!

First up, meet Donna—a proud Wiradjuri woman married to a Yuin man, deeply connected to her community and culture. Donna joins us as the new Program Officer for School Readiness. With a strong background in Indigenous Affairs, a passion for working with children and families, and a strong belief in the power of Early Intervention, she will be an incredible addition to the team.

And she's not the only one! More new team members will be starting over the next few weeks, so keep an eye on our socials for introductions.

We wish to acknowledge the Traditional Owners of the land and waters of the Bega Valley and pay our respects to Elders past, present and future.

## Our Services

- ◆ Early Intervention and Therapy Supports for children aged 0-young adult with an NDIS plan.
- ◆ Advice and referral service for families with questions or concerns about their child's development.
- ◆ Supported playgroups for families with children aged 0-school aged in the Bega Valley.
- ◆ Indigenous family support and supported play sessions, service/support linking and transport assistance.
  - ◆ Mobile Toy and Parenting Resource Service.
  - ◆ NDIS Plan Management.

### A Little Kindness Goes a Long Way

Our Social Group has launched a special community project, spreading joy one leaf at a time! Around town, you might spot beautifully hand-painted leaves, each carrying a little magic of its own. If you find one, you have two choices:

1 Keep it as a small token of kindness.

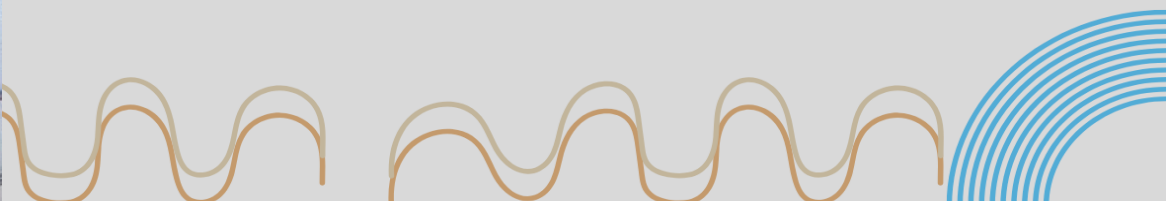
2 Move it to a new spot and help spread the joy to someone else!

I was lucky enough to find one on my morning walk to work, and it made my day. We hope these tiny treasures bring smiles to many more faces!

This project is about more than just beautiful artwork—it's about connection. We believe that children and teens with disabilities thrive when they are valued, included, and actively engaged in their local communities. The painted leaves are a small but powerful way to remind everyone that every person deserves to feel seen, supported, and celebrated.

By sharing these little pieces of kindness, we're encouraging people of all abilities to participate, interact, and be part of something bigger. Because when communities come together, everyone benefits.

Here's to a fantastic year ahead!



OUR  
MEETING  
PLACES



## GROUP ACTIVITIES TERM 1 2025



### SOCIAL GROUP

Join our social group! We have lots of cool activities planned like arts and crafts, outdoor games, and so much more. Whether you love being creative, exploring new hobbies, or just hanging out with friends, there's something for everyone. It's all about having fun, being kind, and making lasting memories with great buddies.

Where: Bega

When: Monday (During school terms)

Time: 3:30pm - 4:30pm

Expression of Interest

Phil 0438 453 480



OUR  
MEETING  
PLACES



## GROUP ACTIVITIES TERM 1 2025



### COOKING GROUP

Come join our cooking group! We're going to make yummy food, try new recipes, and have lots of fun! We'll learn how to cook tasty treats, explore new flavours, and get creative in the kitchen. It's all about having fun, making new friends, and, of course, eating what we make.

Where: Bega

When: Wednesday (During school terms)

Time: 3:30pm - 4:30pm

Expression of Interest

Phil 0438 453 480







# DONATE NOW!

## LET'S CREATE A BRIGHTER FUTURE!

GIVE A LITTLE, HELP A LOT

PlayAbility can now accept donations through our website!

Your donation will go straight into improving services for children and families in the Bega Valley

DONATIONS OVER \$2 ARE TAX DEDUCTIBLE



VISIT OUR WEBSITE  
[www.playability.com.au](http://www.playability.com.au)

CONTACT US  
02 64961918



At PlayAbility we are dedicated to make sure all children, and their families have equal access to social and disability supports without discrimination, irrespective of race, language, religion, ethnic origin, ability or other status. Your generous donation can make a significant impact.

If you would like to donate or find our more please scan the QR code or click the link to our website:

[PlayAbility Inc | Registered NDIS provider](#)



## Early Intervention and Therapy Supports

### Our Team

**Suzie Eruera** - Early Childhood Support Manager / Specialist Teacher

**Pauline Mendes** - Therapy Support Manager / Speech Pathologist

**Karin Champagne**—Specialist Teacher

**Lucy Gollan**—Specialist Teacher

**Sue Hill**—Specialist Teacher

**Holly Sutor-Fogarty**—Specialist Teacher

**Catherine Brown**—Specialist Teacher

**Anna Baker**—Specialist Teacher

**Brooke Russell**—Development Specialist  
(On Maternity leave)

**Phil Power**—Early Childhood Specialist

**Hannah Lenthall**— Allied Health Assistant

**Valerie Schmid-Oke**—Play Therapist

### Feedback

PlayAbility welcomes and values your feedback. It is a vital component of our monitoring and review process and enables our service to evolve and improve.

If you are unhappy with any part of your service, you have the right to make a complaint. Talk to your key worker, email, text or write a letter to us or complete a feedback form and place it in the feedback box at either our Bega or Eden centres.

Feedback can be anonymous and you are welcome to have an advocate during any part of the process. Please ask any staff member for a copy of the Feedback and Complaints policy or you can find it on our website.

Scan the QR to complete a Feedback, Complaints and Compliments Form Online.







## Play Therapy

Play Therapy is an effective child centred technique used in child counselling or psychotherapy to assist children with their emotional development behavioural challenges and making sense of their lived experiences of trauma. Play Therapy meets the child at their level of communication, instead of asking to use adult communication that is still unfamiliar. Abundant research supports its effectiveness to treat a whole host of child emotional and behavioural issues.



🎉 Exciting News! 🎉

We're thrilled to welcome Rex and Wes to the PlayAbility team! These talented Occupational Therapy students from the University of Canberra are joining us to observe and learn more about our practices. We're so excited to have them on board and can't wait to see the fresh perspectives they'll bring.

Let's give Rex and Wes a warm PlayAbility welcome! 🥰👏







### **Changes in NDIS Funding**

**Recently the NDIS released changes and clarification about supports it will fund, and those it won't. In short, the NDIA can only be accessed for items listed as 'approved supports'.**

**As a registered provider, services from PlayAbility are not affected by these changes. Neither are in person therapy services from qualified allied health practitioners. However, many alternative therapies will no longer be covered.**

**For example, the NDIA will no longer fund swimming lessons, gymnastics, and complimentary therapies such as animal/equine therapy or yoga (unless they are included in participants plan /or delivered by a therapist). See click this link to the**

**NDIS What does NDIS fund? | NDIS**

**If you are unsure if services you receive are affected by these changes please contact your Plan Manager or call us on 6496 1918.**



# Welcome to PlayAbility Family Support



## Who we are:

PlayAbility Family Support is an all-inclusive service. Our aim is to **empower** children and their families to set and **achieve** real and measurable goals in **education, development, wellbeing, social, emotional** and **health**. These family-centred goals are achieved through strength-based programs focused on creating a world where children feel connected to their **identity, community** and **culture**.

## What we do:

- Mobile Toy and Parenting Resource Service
- School transition programs and school collaboration
- Navigating the NDIS and access
- Supported Playgroups (Outdoor reconnect play session)
- Supported Community groups
- Referrals to other services
- Internal referrals to Early Intervention Specialists
- Paperwork and support letters for housing, Centrelink, care and education.
- Home visits
- Connecting families to parenting groups
- Transport assistance
- Attending appointments (Dr, Dentist, EYAT, CIFS, EACH)
- Development and implementing collaborative Family Planning



For more information please call our office on 6496 1918

Don't forget to check our website. You can access all our timetables or send us a message from your computer,



## Referrals

For service providers, NDIS plan managers/ coordinators please use the referral form on our website.

[Referrals to PlayAbility Inc](#)

We can also link you up with our family support team. Please see above for details about their services or ring our office on 6496 1918.

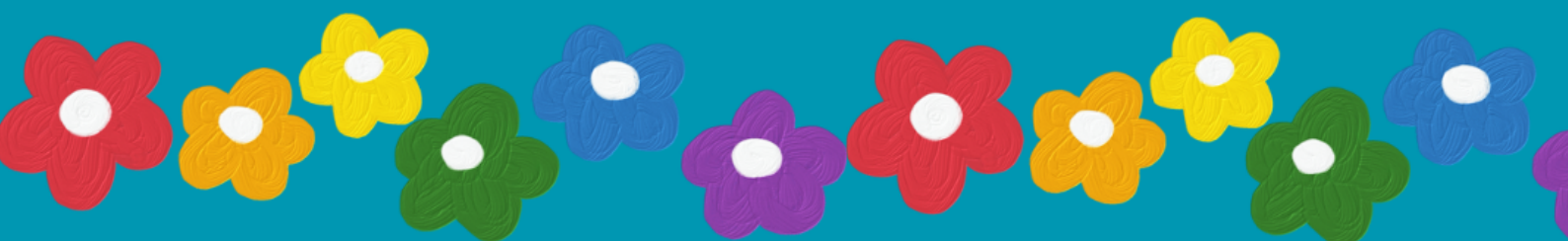




## Family Support Playgroup 2024 - A Year in Review

We have had a wonderful year with our Playgroups at Eden on Mondays, Cobargo on Tuesdays and Bega on Wednesdays. There was a huuuuge influx of babies at the Eden Centre, and I have seen many of the children at all 3 locations develop in leaps and bounds with their language, socialisation, fine and gross motor skills throughout the year.

It has been particularly lovely to see many new parents making friends at Playgroup and socialising with other parents during the week.





# Parent and Carer Feedback on Playgroup Experience



## BEGA

There's a good variety of resources to borrow from the Toy Truck.

Our experience at Playgroup has positively influenced my family through friendships and experiences

My experience at Playgroup has positively influenced my family through making lots of friends for both Mums and kids

Playgroup offers developmentally and culturally appropriate activities due to having a huge range of toys for every age.

## COBARGO –

Love that the PG is outdoors

The staff are awesome!

My experience at Playgroup has positively influenced my family through community involvement

My experience at Playgroup has positively influenced my family through socialisation.

## EDEN

Quality interactions occur between staff and children through Fran and Halle being very supportive and looking out for the needs of the children.

We have loved being part of the Playgroup at Eden and wish to thank the team

My experience at Playgroup has positively influenced my family through my son now interacting more and more with other children and I am making new friends

Fran and Halle are fantastic and make everyone feel so welcome

Great resources for mixed ages

This is our favourite day of the week because of being able to socialise and mix with other children

My daughter feels safe and seen by the staff

Having consistent staff has been great in developing relationships

We always feel valued and often asked for our opinion.











# MOBLIE TOY LIBRARY AND PARENTING RESOURCE SERVICE

DISCOVER OUR WIDE RANGE OF TOYS FOR ALL AGES.  
IF YOU SEE US OUT AND ABOUT, POP OVER FOR A CHAT.  
FOR MORE INFORMATION, CALL US 6496 1918



MONDAY	TUESDAY	WEDNESDAY
Feb 10th <b>EDEN</b> Playability Playgroup 3 Crown Lane 10:30 - 11:30am		Feb 12th <b>TATHRA</b> Playgroup Lions Park 10:30 - 11:30am
Feb 17th <b>TOWAMBA</b> Playgroup Nungutta Street 10:30 - 11:30am	Feb 18th Toy Truck & Pop Up Playgroup <b>MERIMBULA</b> Spencer Park 10:30 - 12pm	Feb 19th <b>BEGA</b> Playability Playgroup 35 Parker Street 10:15 - 11:15am
Feb 24th <b>CANDELO</b> John Gordon Memorial Park 10:30 - 11:30am	Feb 25th <b>BEGA</b> Sapphire Neighbourhood Service Playgroup, Uniting Church Hall 10:30 - 11:30am	Feb 26th <b>ROCKY HALL</b> Preschool 9 - 10am
	March 4th Toy Truck & Pop Up Playgroup <b>KIAH</b> Hall 10:30 - 12pm	March 5th <b>BERMAGUI</b> Apex Park 10:30 - 11:30am
March 10th <b>EDEN</b> Playability Playgroup 3 Crown Lane 10:30 - 11:30am		March 12th <b>TATHRA</b> Playgroup Lions Park 10:30 - 11:30am
March 17th <b>TOWAMBA</b> Playgroup Nungutta Street 10:30 - 11:30am	March 18th Toy Truck & Pop Up Playgroup <b>MERIMBULA</b> Spencer Park 10:30 -12pm	March 19th <b>BEGA</b> Playability Playgroup 35 Parker Street 10:15 - 11:15am
March 24th <b>CANDELO</b> John Gordon Memorial Park 10:30 - 11:30am	March 25th <b>BEGA</b> Sapphire Neighbourhood Service Play Group, Uniting Church Hall 10:30 - 11:30am	Feb 26th <b>ROCKY HALL</b> Preschool 9 - 10am
	April 1st Toy Truck & Pop Up Playgroup <b>KIAH</b> Hall 10:30 - 12pm	April 2nd <b>BERMAGUI</b> Apex Park 10:30 - 11:30am
April 7th <b>EDEN</b> Playability Playgroup 3 Crown Lane 10:30 - 11:30am		April 9th <b>TATHRA</b> Playgroup Lions Park 10:30 - 11:30am



# PLAYABILITY SUPPORTED PLAYGROUPS



## MONDAYS

PLAYABILITY CENTRE IN  
EDEN  
3 CROWN LN, EDEN

## TUESDAYS

APEX PARK IN COBARGO  
ALONG COBARGO  
BERMAGUI RD

## WEDNESDAYS

PLAYABILITY COTTAGE  
IN BEGA  
35 PARKER ST, BEGA



Contact Us  
02 6496 1918



Email Us  
[admin@playability.com.au](mailto:admin@playability.com.au)

**TERM 1, 2025**

**Monday the 10th of  
February until  
Wednesday the 9th of  
April.**



**From  
10:00am - 11:30am**

